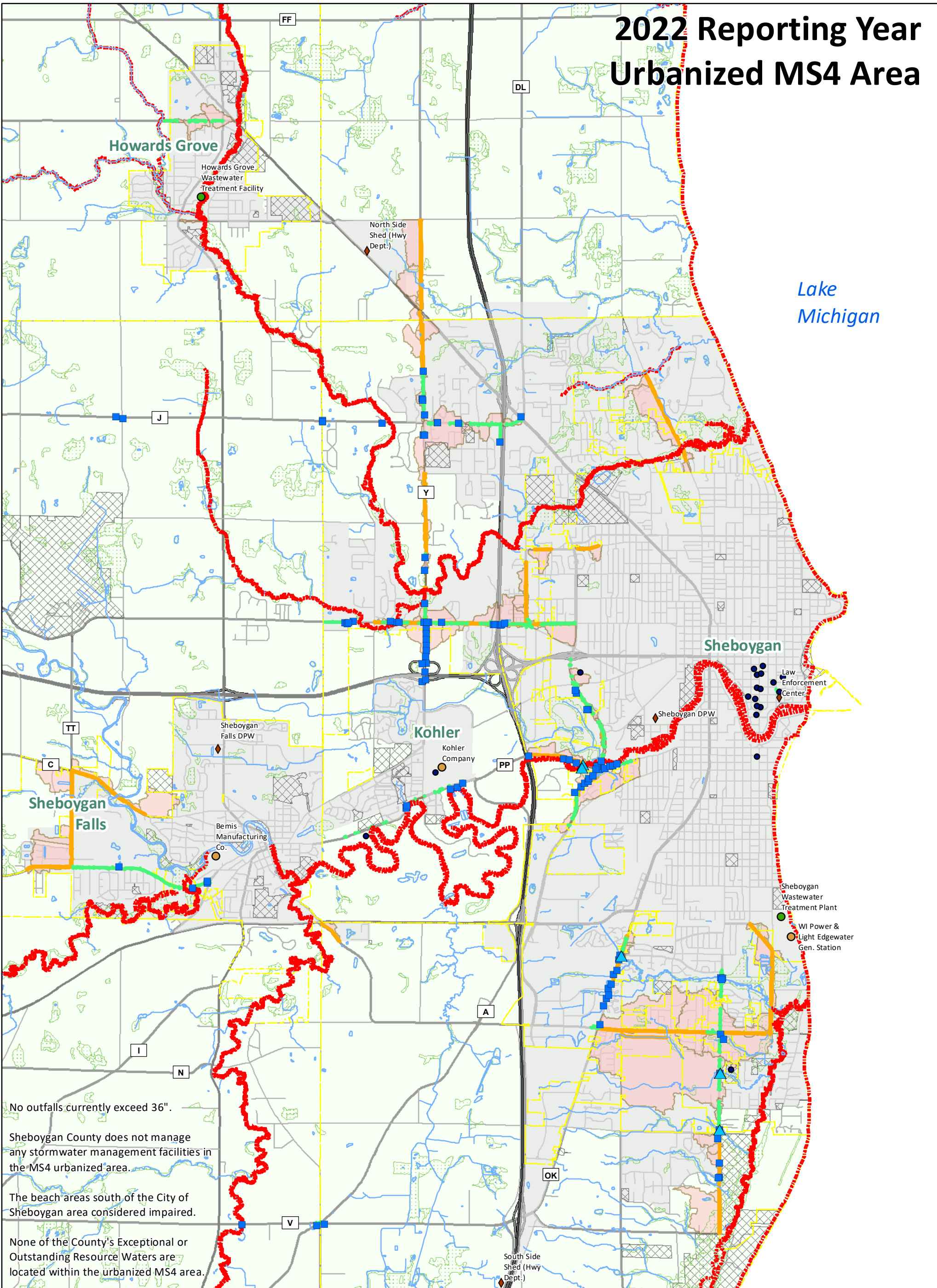


2022 Reporting Year Urbanized MS4 Area



No outfalls currently exceed 36".

Sheboygan County does not manage any stormwater management facilities in the MS4 urbanized area.

The beach areas south of the City of Sheboygan area considered impaired.

None of the County's Exceptional or Outstanding Resource Waters are located within the urbanized MS4 area.

<p>Waterways</p> <ul style="list-style-type: none"> — Outstanding Resource Waters — Exceptional Resource Waters — 303(d) Listed Waterways — Other Waterways 	<p>Structures</p> <ul style="list-style-type: none"> ▲ Minor Outfalls ■ Outlet 	<p>Boundaries</p> <ul style="list-style-type: none"> Municipal Boundaries Wetland Boundaries Public Open Space Areas Sub-basin Drainage Boundaries Urbanized Area 	<p>Places</p> <ul style="list-style-type: none"> ● Historic Places ● Municipal WPDES Permittees ● Industrial WPDES Permittees ◆ Municipal Buildings and Pits 	<p>Stormwater Conveyance Systems</p> <ul style="list-style-type: none"> — Storm Sewer — Ditches
---	---	---	---	---

